

AVAILABLE
NOW

FernHoward

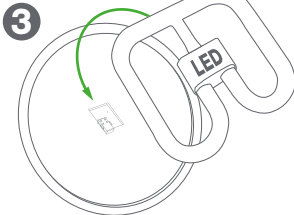
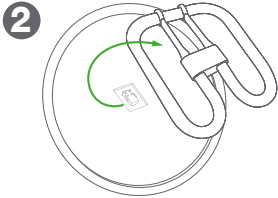
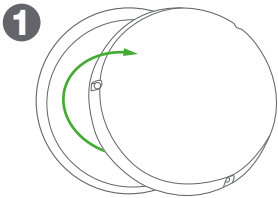
Lighting



Upgrade
any bulkhead from
2D to LED

Simple as 1-2-3

PUSH FIT
that's it...



anyone can do it!

LED





Replacement Lamp
for 16 or 28W 2D

Compatible with all major 2D bulkheads, HF and Switch Start, including EM*

- Uses 50% less energy
- Lasts 3x longer
- Creates exactly the same light as replaced 16 or 28W CFL lamp

 40,000h	 GR10q	 ON OFF 50,000x	 3500K Colour Temperature	 LED	 2 YEAR Warranty
--	---	--	--	--	---

Available in 2 sizes

 TC-DD Lamp	 LED Lamp
 16W & 28W	 11W & 16W

*visit our website for a list of products tested and approved for compatibility

Quality
LED Lighting

+ 44 (0)1420 470400
sales@fernhoward.com | www.fernhoward.com

LED Replacement Lamp

for 16 or 28W 2D

Product Code	Description	Replacement for	Colour Temperature	Size (mm)	Lumen Output (lm)	Power (W)	Efficacy (lm/W)	Price
L28-4-LED-3500	Large - LED TC-DD lamp	28W CFL	3500K	200 x 187 x 39	1600	16	100	
L16-4-LED-3500	Small - LED TC-DD lamp	16W CFL	3500K	139 x 139 x 26	1000	11	91	



* Indicative Figures, based on 10 hours use per day and £0.14 kWh cost



PUSH FIT
that's it...
anyone can do it!