

AVAILABLE  
**NOW**

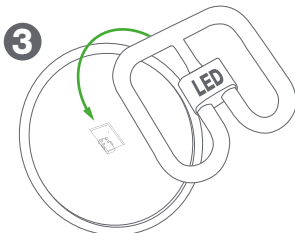
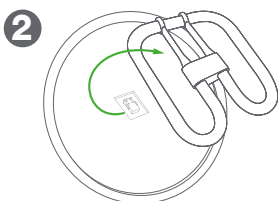
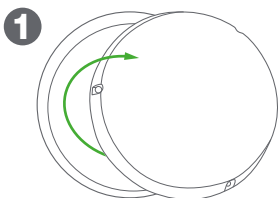
**FernHoward**  
Lighting



**Upgrade**  
any bulkhead from  
**2D to LED**

Simple as 1-2-3

**PUSH FIT**  
that's it...



*anyone can do it!*

**LED**  
Replacement Lamp  
for 16 or 28W 2D

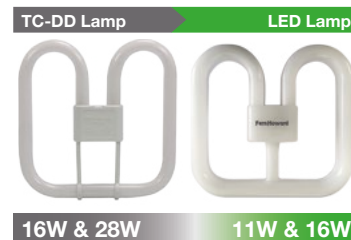
Compatible with most High Frequency 2D  
bulkheads, including EM

*Please visit our website for a list of fittings tested and  
approved for compatibility*

- Uses 50% less energy
- Lasts 3x longer
- Creates exactly the same light as replaced  
16 or 28W CFL lamp



Available in 2 sizes



Quality  
**LED** Lighting

+ 44 (0)1420 470400

sales@fernhoward.com | www.fernhoward.com

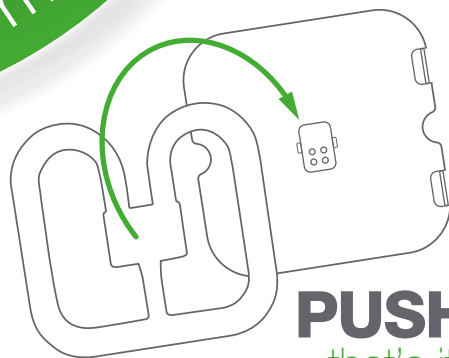
# LED Replacement Lamp for 16 or 28W 2D

Product Code	Description	Replacement for	Colour Temperature	Size (mm)	Lumen Output (lm)	Power (W)	Efficacy (lm/W)	Price
L28-4-LED-3500	Large - LED TC-DD lamp	28W CFL	3500K	200 x 187 x 39	1600	16	100	
L16-4-LED-3500	Small - LED TC-DD lamp	16W CFL	3500K	139 x 139 x 26	1000	11	91	

Only to be used with High Frequency (Electronic) CFL ballast max 16W (L16-4-LED-3500) or 28W (L28-4-LED-3500)



\* Indicative Figures, based on 10 hours use per day and £0.14 kWh cost



**PUSH FIT**  
that's it...  
anyone can do it!