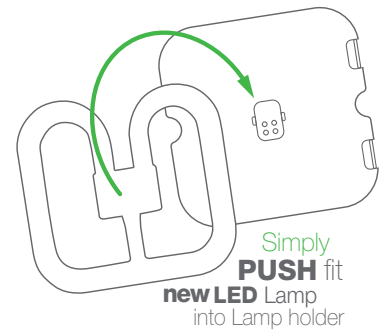


LED TC-DD LAMP

LED Replacement Lamps for 16 or 28W 2D lamps



Simple as 1-2-3: Upgrade any 2D bulkhead to LED with our simple push-fit replacement lamp.



FEATURES

- Classic 2D shape
- Creates exactly the same light as replaced 16 or 28W CFL lamp
- Very energy efficient - uses 50% less energy than equivalent CFL lamp
- Lasts 3x longer than CFL lamp
- Reduced running and zero maintenance costs
- Better quality of light
- Frequent Switching - turn on/off as often as you like without compromising lifespan of the lamp
- Better for the environment too, contains no lead or mercury

Available in 2 sizes

TC-DD Lamp

LED Lamp



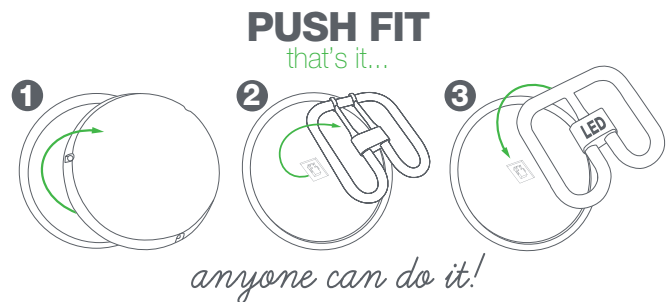
16W & 28W

11W & 16W

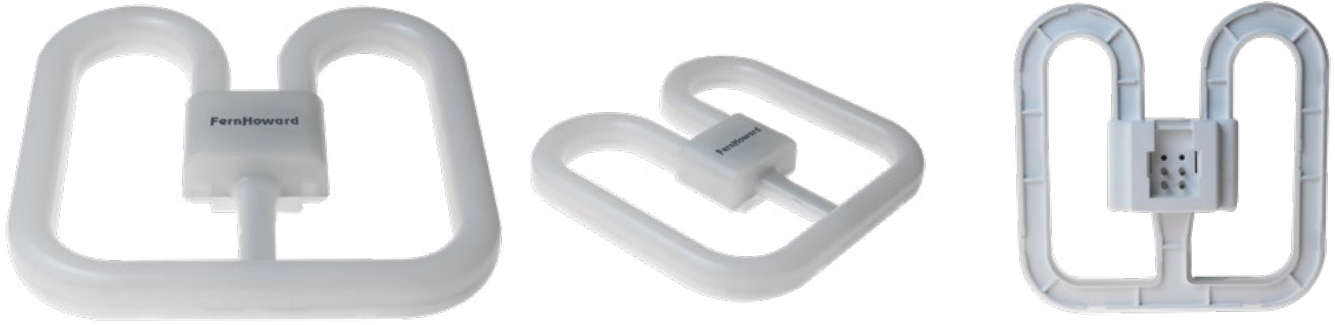
SIMPLE AS 1-2-3

- Quick and easy to replace old CFL lamp, just push new LED lamp into lamp holder, no rewiring required
- Compatible with all major 2D bulkheads, HF or Switch Start, including EM*

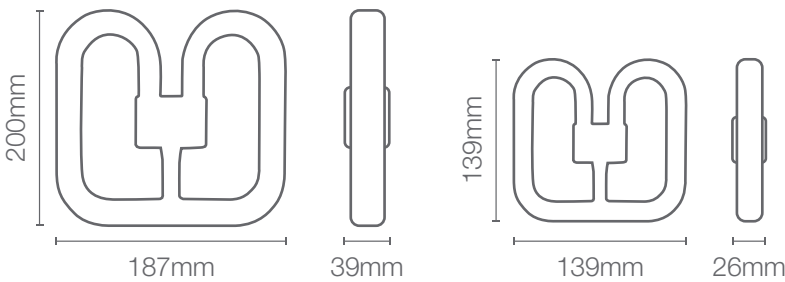
*visit our website for a list of products tested and approved for compatibility



LED TC-DD LAMP

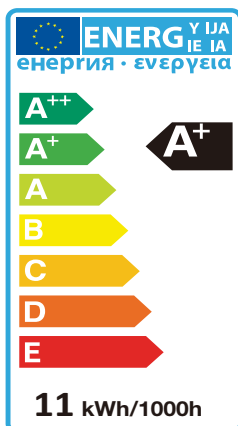
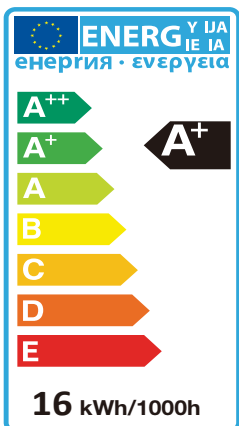


TECHNICAL INFORMATION



	Large	Small		Large	Small
CRI	>80	>80	Weight (g)	145	85
Colour Temperature	3500K Warm White		Dimensions (mm)	200 x 187 x 39	139 x 139 x 26
Switching Cycle	>50,000 times		Replacement for	28W TC-DD lamp	16W TC-DD lamp
System Power (W)	16	11	Material	Polycarbonate Diffuser PPS base cover	
Lamp Holder	GR10q 4pin		Design Life	40,000 hours	
			Warranty	2 years	

STANDARDS



ORDERING GUIDE

Standard Product Code			Performance Data		
Size	Replacement for	LED TC-DD LAMP	Lumen Output (lm)	Wattage (W)	Efficacy (lm/W)
			L28-4-LED-3500	Large	28W TC-DD Lamp
L16-4-LED-3500	Small	16W TC-DD Lamp	1000	11	91

Not to be used in a 38W fitting