

AVAILABLE
September 2018

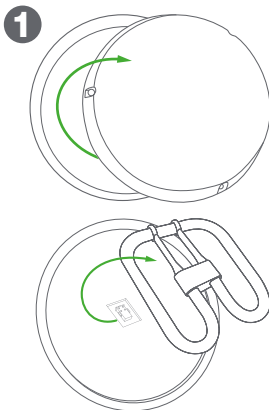
FernHoward

Lighting

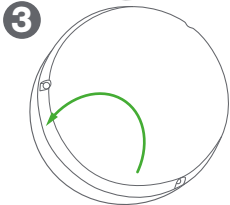
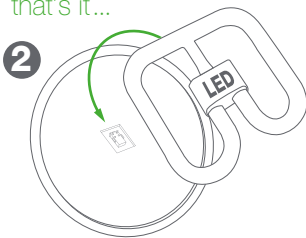


Upgrade
any bulkhead from
2D to LED

Simple as 1-2-3



PUSH FIT
that's it...



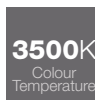
anyone can do it!

LED

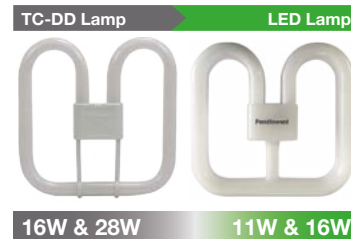
Replacement Lamp
for 16 or 28W 2D

Compatible with all major 2D bulkheads, HF and Switch Start, including EM*

- Uses 50% less energy
- Lasts 3x longer
- Creates exactly the same light as replaced 16 or 28W CFL lamp



Available in 2 sizes



Quality
LED Lighting

*visit our website for a list of products tested and approved for compatibility

LED Replacement Lamp

for 16 or 28W 2D

Product Code	Description	Replacement for	Colour Temperature	Size (mm)	Lumen Output (lm)	Power (W)	Efficacy (lm/W)	Price
L28-4-LED-3500	Large - LED TC-DD lamp	28W CFL	3500K	200 x 187 x 39	1600	16	100	
L16-4-LED-3500	Small - LED TC-DD lamp	16W CFL	3500K	139 x 139 x 26	1000	11	91	



* Indicative Figures, based on 10 hours use per day and £0.14 kWh cost



PUSH FIT
that's it...
anyone can do it!