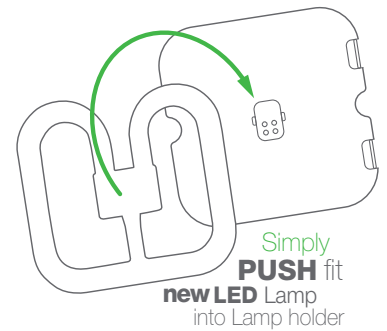


LED 2D LAMP

LED Replacement Lamps for 16 or 28W HF 2D lamps



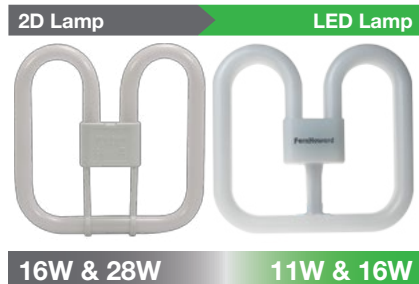
Simple as 1-2-3: Upgrade any HF 2D bulkhead to LED with our simple push-fit replacement lamp.



FEATURES

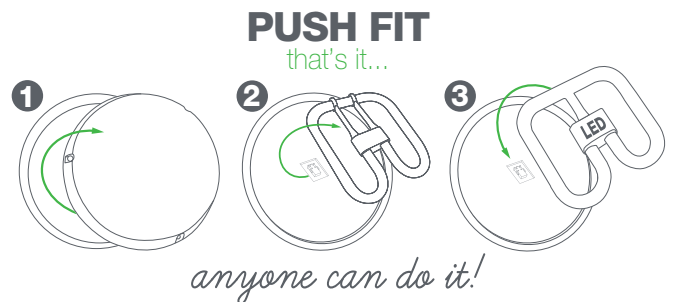
- Classic 2D shape
- Creates exactly the same light as replaced 16 or 28W CFL lamp
- Very energy efficient - uses 50% less energy than equivalent CFL lamp
- Lasts 3x longer than CFL lamp
- Reduced running and zero maintenance costs
- Better quality of light
- Frequent Switching - turn on/off as often as you like without compromising lifespan of the lamp
- Better for the environment too, contains no lead or mercury

Available in 2 sizes

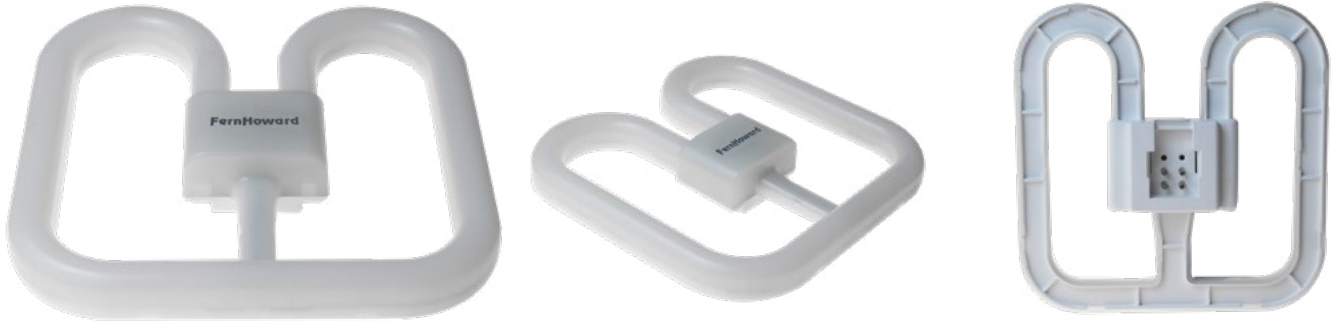


SIMPLE AS 1-2-3

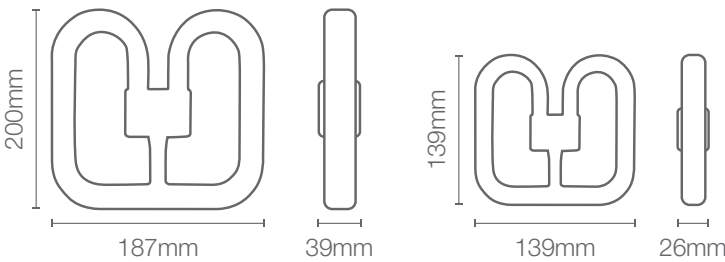
- Quick and easy to replace old CFL lamp, just push new LED lamp into lamp holder, no rewiring required
 - Compatible with most High Frequency 2D bulkheads, including EM
- Please visit our website for a list of fittings tested and approved for compatibility*



LED 2D LAMP



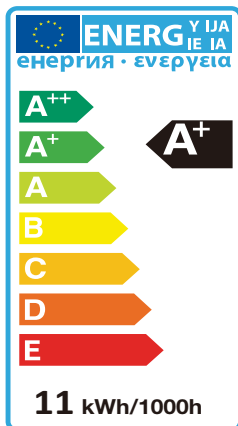
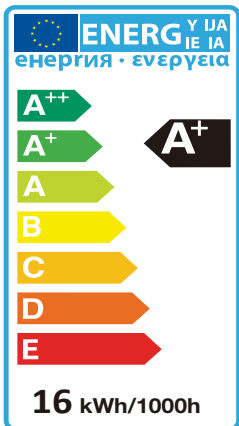
TECHNICAL INFORMATION



	Large	Small
CRI	>80	>80
Colour Temperature	3500K Warm White	
Switching Cycle	>50,000 times	
System Power (W)	16	11
Lamp Holder	GR10q 4pin	

	Large	Small
Weight (g)	145	85
Dimensions (mm)	200 x 187 x 39	139 x 139 x 26
Replacement for	28W 2D HF lamp	16W 2D HF lamp
Material	Polycarbonate Diffuser PPS base cover	
Design Life Warranty	40,000 hours 2 years	

STANDARDS



ORDERING GUIDE

Standard Product Code			Performance Data		
Size	Replacement for		Lumen Output (lm)	Wattage (W)	Efficacy (lm/W)
LED TC-DD LAMP					
L28-4-LED-3500	Large	28W 2D HF Lamp	1600	16	100
L16-4-LED-3500	Small	16W 2D HF Lamp	1000	11	91

Only to be used with High Frequency (Electronic) CFL ballast max 16W (L16-4-LED-3500) or 28W (L28-4-LED-3500).