

Installation Instructions - LED 2D Lamp & LED 2D Anti-Drug Lamp



L16-4-LED-3500

Direct replacement for **16W** GR10q 4 Pin CFL Lamps with Electronic Ballasts

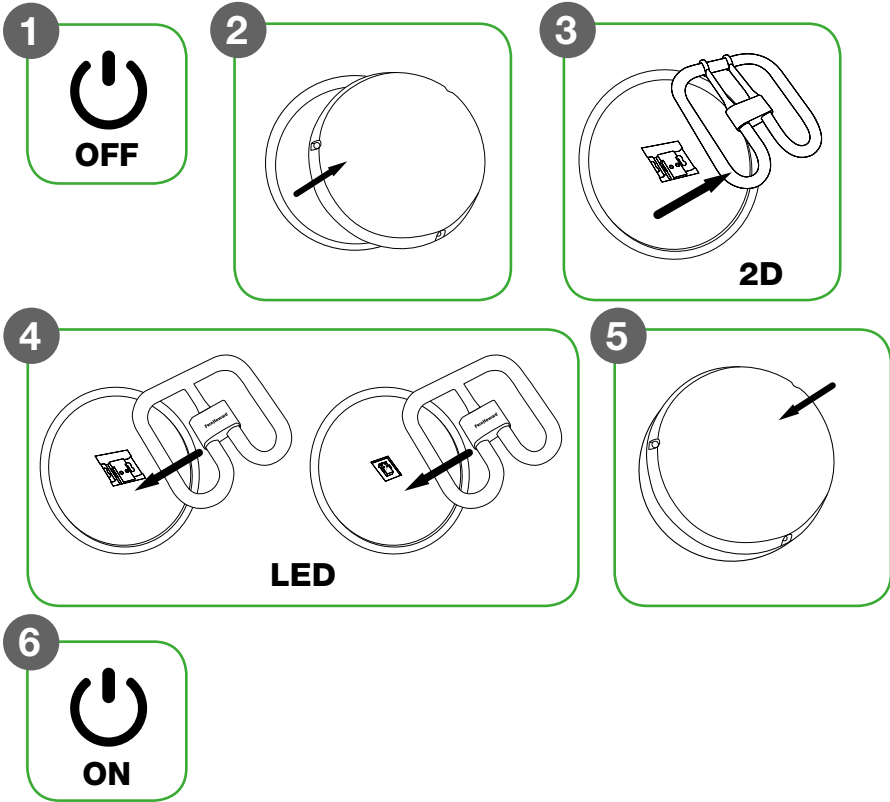
L28-4-LED-3500

Direct replacement for **28W** GR10q 4 Pin CFL Lamps with Electronic Ballasts

L28-4-LED-BLUE

Anti-Drug Blue LED replacement for **28W** GR10q 4 Pin CFL Lamps with Electronic Ballasts

Installation Instructions - LED 2D Lamp & LED 2D Anti-Drug Lamp



Pre-Installation Notes

To install the LED TC-DD lamp, please read the entire installation guide carefully.

The product is not intended to be used with dimmers

It is only to be used with High Frequency (Electronic) CFL ballast max 16W (L16-4-LED-3500) or 28W (L28-4-LED-3500 and L28-4-LED-BLUE)

Not to be used in Switch Start fittings, HF only!

This lamp is not suitable for direct connection to the mains.

- Bypassing the original ballast will result in safety and regulation issues
- The existing power factor compensation capacitors (starter cap) worsen the power factor, but may remain in the circuit.
- The replaced fluorescent lamp should be disposed of properly.

Warning

Risk of fire or Electric Shock. Disconnect power before installation of the product.

LED retrofit installation must be done by a qualified electrician only and all safety instructions must be followed to avoid a risk of injury or property damage.

Note: Check the lamp socket condition. If damaged or corroded, replace with a new one.

Please retain this Installation Guide for further reference

This lamp is designed for general lighting

This lamp may not be suitable for use in all applications where a traditional fluorescent lamp has been used.

The temperature range of this lamp is more restricted. In cases of doubt regarding the suitability of the application the manufacturer of this lamp should be consulted.

Warranty

This product is warranted for two years.

Technical Data

Specific data sheets can be downloaded from our website www.fernhoward.com

Fern-Howard Ltd, 2 Newman Lane, Alton, Hampshire, GU34 2QR, United Kingdom.

It is the responsibility of the installer to ensure correct installation. Fern-Howard do not accept any loss or damage to the product, private property and/or persons due to inadequate or incorrect installation. Fern-Howard reserve the right to alter the specifications and/or improve products without prior notice.



FHL484 | ISSUE 3 | DEC2018